

# History



## Minerva park amusement park

**Opening Day** May 15, 1895

**Closed** July 27, 1902

The Minerva Amusement Park was managed by the Columbus Railway Company.

Attractions and landmarks included:

- Merry Go Round
- Target Range
- Tennis Courts
- Baseball Diamonds
- Swan Boats
- Bowling Alley
- Bear Cage
- Monkey Cage
- Deer Pen
- Ornithology Museum
- "Shoot the Chutes" Roller Coaster
- Wishing Well

- Boat Docks
- Pony Track
- Dance Hall
- Casino that featured vaudeville acts and music







PARK GATEWAY.



PARK WELL.



SCENIC RAILWAY.



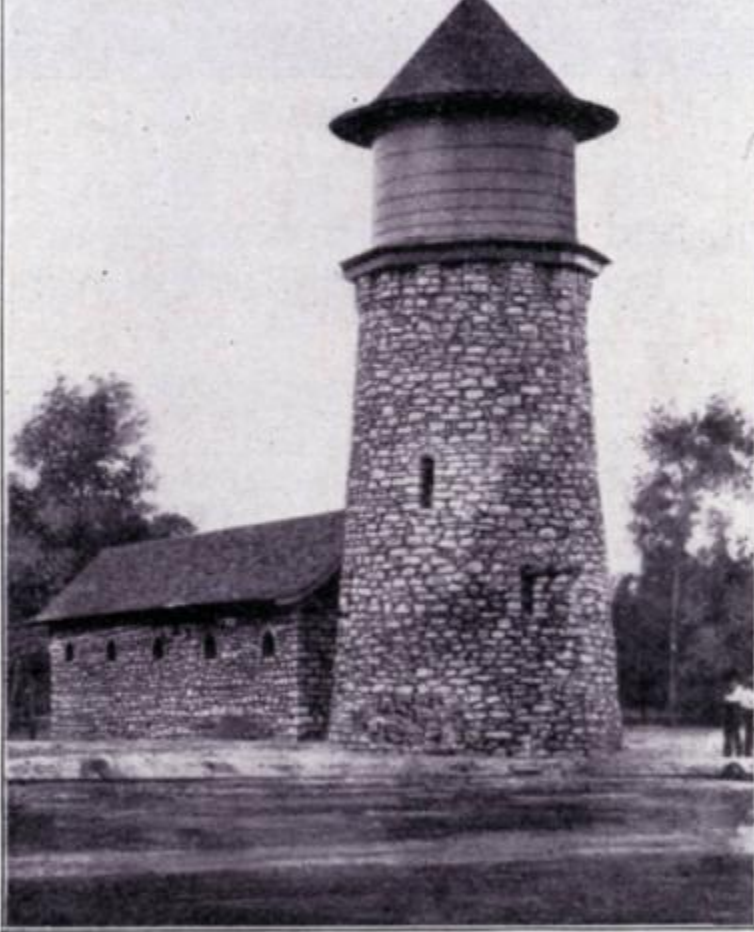
[An Oral History of Minerva Park 1895-1963](#)

[As reported by Village Mayor Carlton Berry](#)

[Read More](#)

## Related Links

- [A History of Minerva Park](#)



WATER TOWER.

[View Slideshow](#)